

Production Working Group



Overview/Mission:

To establish a best practices for implementing Integrated Program Management mechanisms on production contracts with an EVMS requirement.

Leadership:

Co-Chairs



Scott LaFrance

scott.lafrance@baesystems.com



Josh Garvey

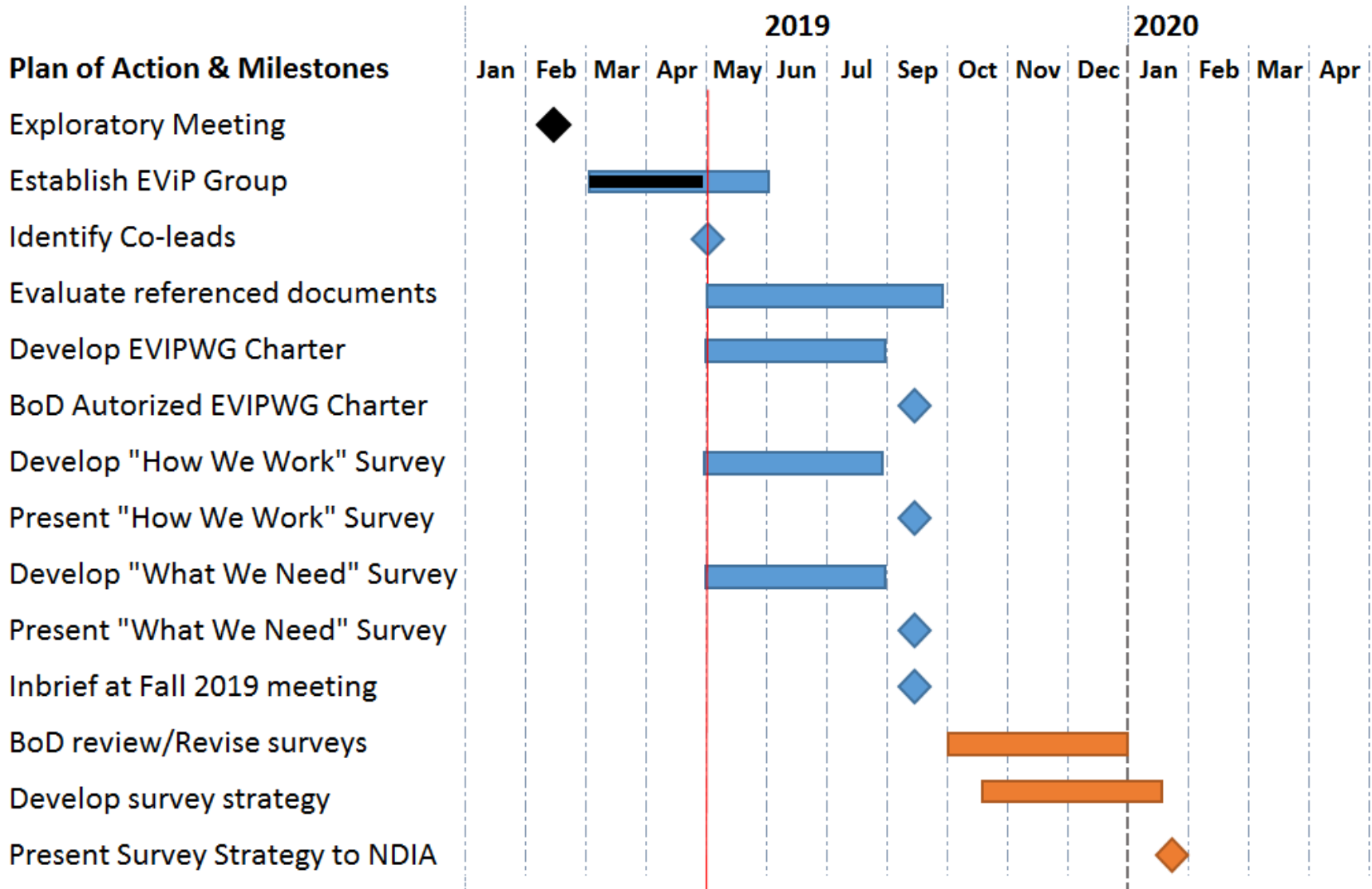
Joshuagarvey@clearplanconsulting.com

Objectives:

- ✓ Evaluate the level of interest with Industry and Government
- ✓ Identify co-chairs
- Clarify vision and mission, purpose statement
- Establish a EViP Charter from the Board of Directors

- NDIA White Paper “EVM in a Production Environment” dated October 10, 2011
- NDIA Addendum to White Paper dated January 2015
- Planning and Scheduling Excellence Guide
- EVMSIG
- EVMIG
- DCMA Cross-Reference Checklist dated June 25, 2015
- 15-Man Ad Hoc Committee (June 9, 1978)

Plan of Action & Milestones



Output of WG meeting on 4/30

- Lisa Cazalet identified as EFCOG liaison
- This group is still in formation, but we are going to start tackling Clearinghouse issues
- Set up bi-weekly working group meetings
 - First meeting Friday, 5/17/2019
 - Will establish a team working SharePoint
- Clarifying scope and purpose to establish WG charter (goal of September 2019)
- Develop industry and government surveys to assess Best Practices
- Considering the appropriate identity of the group. EVM in Production carries certain assumptions that may not be correct

- Material Aggregation (E/MRP and IMS)
 - AAP guidance: MRP does not need to be repeated in the IMS
 - “Production programs are often planned using inputs from a Manufacturing/Enterprise Resource Planning...”
 - These systems are used as the basis for planning and statusing the detailed efforts which are aggregated, with the appropriate interdependencies and sequencing preserved, within the network schedule (IMS), minimally at the work package level, for critical path analysis.
 - Also: Industry’s impression is that the definition of SVTs is to restrictive, given the guidance listed above (as used within a production environment)
 - This issue is being discussed within the Planning and Scheduling Working Group

Changes to Open Work Packages

- Past guidance has been given that material and MFG labor can be added to in the future to MRP driven work packages as long as it is for new scope and control MS are not affected (GL29 affected)
- WP Linked to P.O.s or Shop Orders
 - Performing a SPA on open work packages and establishing new WP and work authorizations production requirements evolve would be unduly onerous and is viewed as an administrative and compliance exercise and does not add program management value to the organization.
- The problem of PPC calculation.
 - Adjusting future value will alter the Physical % Complete of work in progress.
- The problem of emergent work or rework on closed or in-progress work packages