

wInsight Analytics 7.0

Harnessing the Power of your EVM Data

The Evolving Landscape

Business Users Move Fast



- Ease of use
- Flexibility
- Interactive
- Self service
- Any device

IT needs to retain control over data

- Sophisticated business users
- Deliver quickly
- Deliver relevant data
- Ensure security and scalability



Deltek Know more.
Do more.™

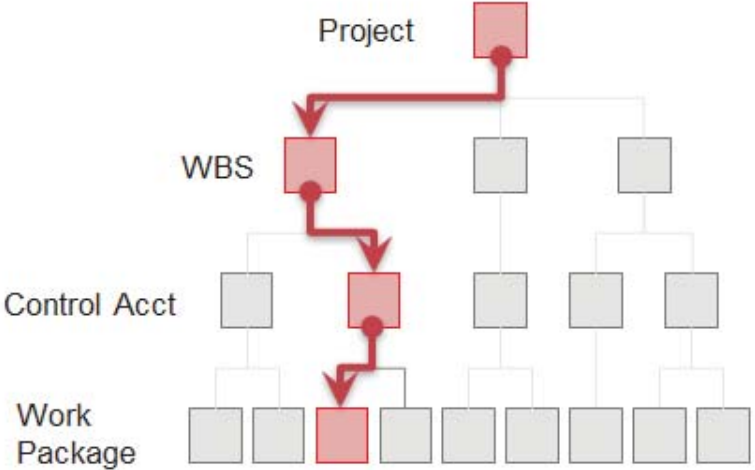
wInsight Analytics



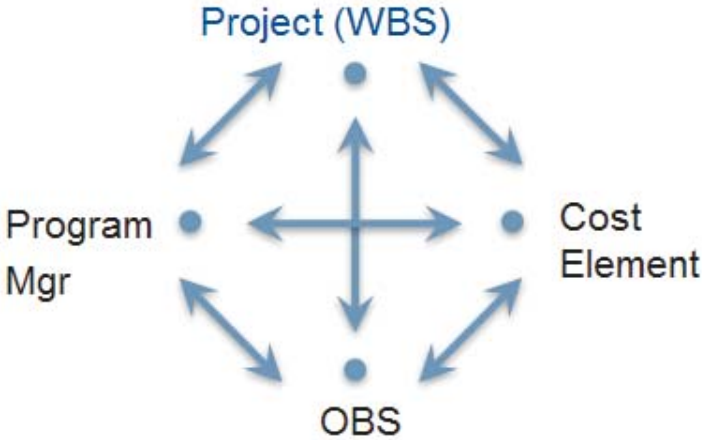
Business Discovery: What's the Big Deal?



Traditional BI ----- Data Discovery



- IT Driven**
- Linear, pre-defined thinking
 - Insights missed in hidden data
 - Months to change
 - Data-centric



- User Driven**
- User decides where to start
 - All data, always visible
 - Minutes to change
 - Insight driven



Showing the difference - Reporting

BAC and EAC Changes Report - Work Breakdown Structure (Dollars)					
Report Date: JAN 04 Contract Name: MOH-2 Contract Number: F04695-86-C-0050 Contractor: MEGA HERZ ELEC & VEN			Financial Analyst: MR E. MONEY Contract Manager: MR B. TECH		
LVL	ID NUMBER DESCRIPTION	BAC (Last Period) (Current Period)	BAC Change	EAC (Last Period) (Current Period)	EAC Change
3	2100 PROJ MANAGEMENT	597.0 618.4	21.4	600.2 621.6	21.4
3	2200 SYS ENGINEERING	275.4 283.4	8.0	275.4 283.4	8.0
3	2300 FUNC INTEGRA	464.8 482.8	18.0	495.6 513.6	18.0
3	3100 SENSORS	1,728.4 1,728.4	0.0	1,750.0 1,750.0	0.0
3	3200 COMMUNICATIONS	1,962.8 2,043.0	80.2	2,049.8 2,130.0	80.2
3	3300 AUX EQUIP	1,601.8 2,418.2	816.4	1,593.4 2,409.8	816.4
3	3400 ADPE	577.8 599.2	21.4	573.2 594.6	21.4
3	3500 COMP PROGRAMS	181.0 189.0	8.0	182.4 190.4	8.0

vs. Data Discovery



File Edit View Selections Layout Settings Bookmarks Reports Tools Object Window Help

Clear Back Forward Lock Unlock

Master Dashboard Data Validation Emerging Issues Detail Analysis EAC Realism Future Forecast Sheet10

Contract

- MOH-2
- ARINC_A
- Battleship_A
- Battleship_B
- Battleship_C
- BOOMERANG
- COBRAIN
- FAGI F

Period

Cumulative Current

Amount Percent

Data Options

Structure: WBS

Unit: Dollars

Exclude Indirect

Unindented Elements

- 1000 - MOH-2
- 2000 - PROJ MANAGEMENT
- 2100 - PROJ MANAGEMENT
- 2200 - SYS ENGINEERING
- 2300 - FUNC INTEGRA
- 3000 - PRIME EQUIP
- 3100 - SENSORS
- 3200 - COMMUNICATIONS
- 3300 - AUX EQUIP
- 3400 - ADPE
- 3500 - COMP PROGRAMS
- 3600 - PCC
- 3700 - DATA DISPLAY
- 3800 - I & A
- 4000 - SPARES
- 5000 - DATA
- 5100 - ENG DATA
- 5200 - MANAGEMENT D...
- 6000 - TEST & EVAL

Additional Filters

CAM

User Filters

Contract: MOH-2 for 01/31/08

Show Contract Info

Indented Sort View - Cumulative Dollars

WBS	SV	CV	Vac	SV	CV	Vac
1000 - MOH-2	↓	↓	↓	-427,800	-499,000	35,200
2000 - PROJ MANAGEMENT	↓	↔	↔	-13,200	-61,200	-34,000
2100 - PROJ MANAGEME...	↑	↔	↔	-12,000	-17,400	-3,200
2200 - SYS ENGINEERING	↔	↓	↔	6,400	-26,400	0
2300 - FUNC INTEGRA	↓	↓	↔	-7,600	-17,400	-30,800
3000 - PRIME EQUIP	↓	↓	↔	-384,800	-367,600	-309,000
3100 - SENSORS	↑	↓	↔	-36,600	-10,600	-21,600
3200 - COMMUNICATIONS	↑	↓	↔	-203,200	-130,800	-87,000
3300 - AUX EQUIP	↓	↓	↔	-93,200	78,200	8,400
3400 - ADPE	↓	↓	↔	-10,200	12,600	4,600
3500 - COMP PROGRAMS	↔	↔	↔	-200	3,400	-1,400
3600 - PCC	↓	↑	↔	-11,400	-296,200	-187,200
3700 - DATA DISPLAY	↑	↔	↔	-113,000	0	0
3800 - I & A	↓	↔	↔	83,000	-24,200	-24,800
4000 - SPARES	↑	↑	↔	1,200	-7,800	-6,200
5000 - DATA	↔	↓	↔	-6,600	-17,800	-16,000
5100 - ENG DATA	↑	↓	↔	-6,600	-4,600	0
5200 - MANAGEMENT D...	↑	↓	↔	0	-13,200	-16,000
6000 - TEST & EVAL	↔	↑	↔	14,600	600	-2,000

Bottom to Top Cumulative SV

Cumulative SV % and CV % Distribution

Bubble size by SV

Bottom 5 Cumulative SV

Lowest Elements	SV	SV
3200 - COMMUNICATIONS	-203,200.00	↑
3700 - DATA DISPLAY	-113,000.00	↑
3300 - AUX EQUIP	-93,200.00	↓
3100 - SENSORS	-36,600.00	↑
2100 - PROJ MANAGEMENT	-12,000.00	↑

Top 5 Cumulative SV

Lowest Elements	SV	SV
3800 - I & A	83,000.00	↓
6200 - SYSTEM TEST	12,000.00	↓
2200 - SYS ENGINEERING	6,400.00	↔
6300 - PCC TEST	3,200.00	↑
4000 - SPARES	1,200.00	↑

Bottom 5 Cumulative CV

Lowest Elements	CV	CV
3600 - PCC	-296,200.00	↑
3200 - COMMUNICATIONS	-130,800.00	↓
2200 - SYS ENGINEERING	-26,400.00	↓
3800 - I & A	-24,200.00	↓
2300 - FUNC INTEGRA	-17,400.00	↓

Top 5 Cumulative CV

Lowest Elements	CV	CV
3300 - AUX EQUIP	78,200.00	↓
3400 - ADPE	12,600.00	↓
6300 - PCC TEST	4,200.00	↓
3500 - COMP PROGRAMS	3,400.00	↓
6100 - TEST FACILITIES	2,000.00	↔

Bottom 5 Vac

Lowest Elements	Vac	Vac
3600 - PCC	-187,200.00	↔
3200 - COMMUNICATIONS	-87,000.00	↔
2300 - FUNC INTEGRA	-30,800.00	↔
3800 - I & A	-24,800.00	↔
3100 - SENSORS	-21,600.00	↔

Top 5 Vac

Lowest Elements	Vac	Vac
3300 - AUX EQUIP	8,400.00	↓
3400 - ADPE	4,600.00	↔
2200 - SYS ENGINEERING	0.00	↔
5100 - ENG DATA	0.00	↔
6300 - PCC TEST	0.00	↔

BCWP to Total Budget Comparison

Unit Scale: Ones

Selected Related Unrelated

Worse than -10% Between -10% and -5% Between -5% and 10% Better than 10% Change Threshold 5%

Last Updated: 9/18/2013 12:13:10 AM

Build: 7.0.0700.234

Deltek Know more. Do more.™

File Edit View Selections Layout Settings Bookmarks Reports Tools Object Window Help

Clear Back Forward Lock Unlock

Master Dashboard Data Validation Emerging Issues Detail Analysis EAC Realism Future Forecast

Contract: MOH-2 for 01/31/08

Indented Sort View - Cumulative Dollars

WBS	SV	CV	Vac	SV	CV
1000 - MOH-2	↓	↓	↓	-427,800	-499,000
2000 - PROJ MANAGEMENT	↓	↓	↓	-13,200	-61,200
2100 - PROJ MANAGEM...	↑	↓	↔	-12,000	-17,400
2200 - SYS ENGINEERING	↔	↓	↔	6,400	-26,400
2300 - FUNC INTEGRA	↓	↓	↔	-7,600	-17,400
3000 - PRIME EQUIP	↓	↓	↑	-384,800	-367,600
3100 - SENSORS	↑	↓	↔	-36,600	-10,600
3200 - COMMUNICATIONS	↑	↓	↔	-203,200	-130,800
3300 - AUX EQUIP	↑	↓	↔	-93,200	78,200
3400 - ADPE	↓	↓	↔	-10,200	12,600
3500 - COMP PROGRAMS	↓	↓	↔	-200	3,400
3600 - PCC	↓	↑	↔	-11,400	-296,200
3700 - DATA DISPLAY	↑	↓	↔	-113,000	0
3800 - I & A	↓	↓	↔	83,000	-24,200
4000 - SPARES	↑	↑	↔	1,200	-7,800
5000 - DATA	↔	↓	↔	-6,600	-17,800
5100 - ENG DATA	↑	↓	↔	-6,600	-4,600
5200 - MANAGEMENT D...	↑	↓	↔	0	-13,200
6000 - TEST & EVAL	↔	↑	↔	14,600	600

Bottom 5 Cumulative SV

Lowest Elements	SV	SV
3200 - COMMUNICATIONS	-203,200.00	↑
3700 - DATA DISPLAY	-113,000.00	↑
3300 - AUX EQUIP	-93,200.00	↓
3100 - SENSORS	-36,600.00	↑
2100 - PROJ MANAGEMENT	-12,000.00	↑

Bottom 5 Cumulative CV

Lowest Elements	CV	CV
3600 - PCC	-296,200.00	↑
3200 - COMMUNICATIONS	-130,800.00	↓
2200 - SYS ENGINEERING	-26,400.00	↓
3800 - I & A	-24,200.00	↓
2300 - FUNC INTEGRA	-17,400.00	↓

Bottom 5 Vac

Lowest Elements	Vac	Vac
3600 - PCC	-187,200.00	↔
3200 - COMMUNICATIONS	-87,000.00	↔
2300 - FUNC INTEGRA	-30,800.00	↔
3800 - I & A	-24,800.00	↔
3100 - SENSORS	-21,600.00	↔

Bottom to Top Cumulative SV

Cumulative SV % and CV % Distribution

BCWP to Total Budget Comparison

Unit Scale: Ones

Selected Related Unrelated

Worse than -10% Between -10% and -5% Between -5% and 10% Better than 10% ↑ Change Threshold 5%

Last Updated: 9/18/2013 12:13:10 AM
Build: 7.0.0700.234 [QuickView](#)

Deltek Know more. Do more.™

File Edit View Selections Layout Settings Bookmarks Reports Tools Object Window Help

Clear Back Forward Lock Unlock

Master Dashboard Data Validation Emerging Issues Detail Analysis EAC Realism Future Forecast Sheet10

Contract: MOH-2 for 01/31/08

Show Contract Info

Indented Sort View - Cumulative Dollars

WBS	SV	CV	Vac	SV	CV	Vac
1000 - MOH-2	↓	↓	↓	-427,800	-499,000	35,200
2000 - PROJ MANAGEMENT	↓	↓	↓	-13,200	-61,200	-34,000
2100 - PROJ MANAGEM...	↑	↔	↔	-12,000	-17,400	-3,200
2200 - SYS ENGINEERING	↔	↓	↔	6,400	-26,400	0
2300 - FUNC INTEGRA	↔	↓	↔	-7,600	-17,400	-30,800
3000 - PRIME EQUIP	↓	↓	↑	-384,800	-367,600	-309,000
3100 - SENSORS	↑	↓	↔	-36,600	-10,600	-21,600
3200 - COMMUNICATIONS	↑	↓	↔	-203,200	-130,800	-87,000
3300 - AUX EQUIP	↓	↓	↓	-93,200	78,200	8,400
3400 - ADPE	↓	↓	↔	-10,200	12,600	4,600
3500 - COMP PROGRAMS	↔	↓	↔	-200	3,400	-1,400
3600 - PCC	↓	↑	↔	-11,400	-296,200	-187,200
3700 - DATA DISPLAY	↑	↔	↔	-113,000	0	0
3800 - I & A	↑	↓	↔			
4000 - SPARES	↑	↓	↔			
5000 - DATA	↔	↔	↔			
5100 - ENG DATA	↓	↔	↔			
5200 - MANAGEMENT D...	↓	↔	↔			
6000 - TEST & EVAL	↔	↔	↔			

Bottom 5 Cumulative SV

Lowest Elements	SV	SV
3200 - COMMUNICATIONS	-203,200.00	↑
3700 - DATA DISPLAY	-113,000.00	↑
3300 - AUX EQUIP	-93,200.00	↓
3100 - SENSORS	-36,600.00	↑
2100 - PROJ MANAGEMENT	-12,000.00	↑

Top 5 Cumulative SV

Lowest Elements	SV	SV
3800 - I & A	83,000.00	↓
6200 - SYSTEM TEST	12,000.00	↓
2200 - SYS ENGINEERING	6,400.00	↔
6300 - PCC TEST	3,200.00	↑
4000 - SPARES	1,200.00	↑

Bottom 5 Cumulative CV

Lowest Elements	CV	CV
3600 - PCC	-296,200.00	↑
3200 - COMMUNICATIONS	-130,800.00	↓
2200 - SYS ENGINEERING	-26,400.00	↓
3800 - I & A	-24,200.00	↓
2300 - FUNC INTEGRA	-17,400.00	↓

Top 5 Cumulative CV

Lowest Elements	CV	CV
3300 - AUX EQUIP	78,200.00	↓
3400 - ADPE	12,600.00	↓
6300 - PCC TEST	4,200.00	↓
3500 - COMP PROGRAMS	3,400.00	↓
6100 - TEST FACILITIES	2,000.00	↔

Bottom 5 Vac

Lowest Elements	Vac	Vac
EQUIP	8,400.00	↓
E	4,600.00	↔
ENGINEERING	0.00	↔
DATA	0.00	↔
TEST	0.00	↔

et Comparison

5,000,000

3:10 AM Deltek Know more. Do more.™

Cumulative SV % and CV % Distribution

Bubble size by SV

SV %

CV %

Unit Scale: Ones

Selected Related Unrelated

Worse than -10% Between -10% and



File Edit View Selections Layout Settings Bookmarks Reports Tools Object Window Help

Clear Back Forward Lock Unlock

Master Dashboard Data Validation Emerging Issues Detail Analysis EAC Realism Future Forecast Sheet10

Contract

- MOH-2
- ARINC_A
- Battleship_A
- Battleship_B
- Battleship_C
- BOOMERANG
- COBTRAIN
- FAGIF

Period: Cumulative (Selected) Current

Data Options: Structure: WBS, Unit: Dollars, Exclude Indirect: Yes

Unindented Elements

- 2100 - PROJ MANAGEMENT
- 2300 - FUNC INTEGRA
- 3100 - SENSORS
- 3200 - COMMUNICATIONS
- 3600 - PCC
- 3700 - DATA DISPLAY
- 5100 - ENG DATA
- 3400 - ADPE
- 5000 - DATA
- 3000 - PRIME EQUIP
- 1000 - MOH-2
- 2200 - SYS ENGINEERING
- 2000 - PROJ MANAGEMENT

Additional Filters

CAM: User Filters

Contract: MOH-2 for 01/31/08

Show Contract Info

Indented Sort View - Cumulative Dollars

WBS	SV	CV	Vac	SV	CV	Vac
1000 - MOH-2	↓	↓	↓	-427,800	-499,000	35,200
2000 - PROJ MANAGEMENT	↓	↓	↔	-13,200	-61,200	-34,000
2100 - PROJ MANAGEME...	↑	↔	↔	-12,000	-17,400	-3,200
2200 - SYS ENGINEERING	↔	↓	↔	6,400	-26,400	0
2300 - FUNC INTEGRA	↓	↓	↔	-7,600	-17,400	-30,800
3000 - PRIME EQUIP	↓	↓	↑	-384,800	-367,600	-309,000
3100 - SENSORS	↑	↓	↔	-36,600	-10,600	-21,600
3200 - COMMUNICATIONS	↑	↓	↓	-203,200	-130,800	-87,000
3300 - AUX EQUIP	↓	↓	↓	-93,200	78,200	8,400
3400 - ADPE	↓	↓	↔	-10,200	12,600	4,600
3500 - COMP PROGRAMS	↔	↓	↔	-200	3,400	-1,400
3600 - PCC	↓	↑	↔	-11,400	-296,200	-187,200
3700 - DATA DISPLAY	↑	↔	↔	-113,000	0	0
3800 - I & A	↓	↓	↔	83,000	-24,200	-24,800
4000 - SPARES	↑	↑	↔	1,200	-7,800	-6,200
5000 - DATA	↔	↓	↔	-6,600	-17,800	-16,000
5100 - ENG DATA	↓	↓	↔	-6,600	-4,600	0
5200 - MANAGEMENT D...	↑	↓	↑	0	-13,200	-16,000
6000 - TEST & EVAL	↔	↑	↔	14,600	600	-2,000

Bottom to Top Cumulative SV

Cumulative SV % and CV % Distribution

Bottom 5 Cumulative SV

Lowest Elements	SV	SV
3200 - COMMUNICATIONS	-203,200.00	↑
3700 - DATA DISPLAY	-113,000.00	↑
3100 - SENSORS	-36,600.00	↑
2100 - PROJ MANAGEMENT	-12,000.00	↑
3600 - PCC	-11,400.00	↓

Top 5 Cumulative SV

Lowest Elements	SV	SV
5100 - ENG DATA	-6,600.00	↓
2300 - FUNC INTEGRA	-7,600.00	↓
3600 - PCC	-11,400.00	↓
2100 - PROJ MANAGEMENT	-12,000.00	↑
3100 - SENSORS	-36,600.00	↑

Bottom 5 Cumulative CV

Lowest Elements	CV	CV
3600 - PCC	-296,200.00	↑
3200 - COMMUNICATIONS	-130,800.00	↓
2300 - FUNC INTEGRA	-17,400.00	↓
2100 - PROJ MANAGEMENT	-17,400.00	↔
3100 - SENSORS	-10,600.00	↓

Top 5 Cumulative CV

Lowest Elements	CV	CV
3700 - DATA DISPLAY	0.00	↔
5100 - ENG DATA	-4,600.00	↓
3100 - SENSORS	-10,600.00	↓
2100 - PROJ MANAGEMENT	-17,400.00	↔
2300 - FUNC INTEGRA	-17,400.00	↓

Bottom 5 Vac

Lowest Elements	Vac	Vac
3600 - PCC	-187,200.00	↔
3200 - COMMUNICATIONS	-87,000.00	↔
2300 - FUNC INTEGRA	-30,800.00	↔
3100 - SENSORS	-21,600.00	↔
2100 - PROJ MANAGEMENT	-3,200.00	↔

Top 5 Vac

Lowest Elements	Vac	Vac
3700 - DATA DISPLAY	0.00	↔
5100 - ENG DATA	0.00	↔
2100 - PROJ MANAGEMENT	-3,200.00	↔
3100 - SENSORS	-21,600.00	↔
2300 - FUNC INTEGRA	-30,800.00	↔

BCWP to Total Budget Comparison

Unit Scale: Ones

Selected Related Unrelated

Worse than -10% Between -10% and -5% Between -5% and 10% Better than 10% ↑ Change Threshold 5%

Last Updated: 9/18/2013 12:13:10 AM Build: 7.0.0700.234 [QuickView](#)

Deltek Know more. Do more.™

Period

Cumulative Current

- List of Views**
- Contract
 - CPI vs TCPI LRE
 - CPR
 - Current CPR
 - Govt. EAC
 - IPT
 - PM Summary
 - Scorecard
 - Standard
 - Std+WBS
 - VAR Thresholds

Data Options

Structure **WBS**

Unit **Dollars**

Element Type

Lowest Elements

Control Account

Work Package

- Lowest Elements**
- 2100 - PROJ MANAGEMENT
 - 2200 - SYS ENGINEERING
 - 2300 - FUNC INTEGRA
 - 3100 - SENSORS
 - 3200 - COMMUNICATIONS
 - 3300 - AUX EQUIP
 - 3400 - ADPE
 - 3500 - COMP PROGRAMS

Additional Filters

Contract **MOH-2**

CAM

User Filters

Unit Scale: Ones

Selected Related Unrelated

Contract: MOH-2 for 01/31/08

[Help](#)

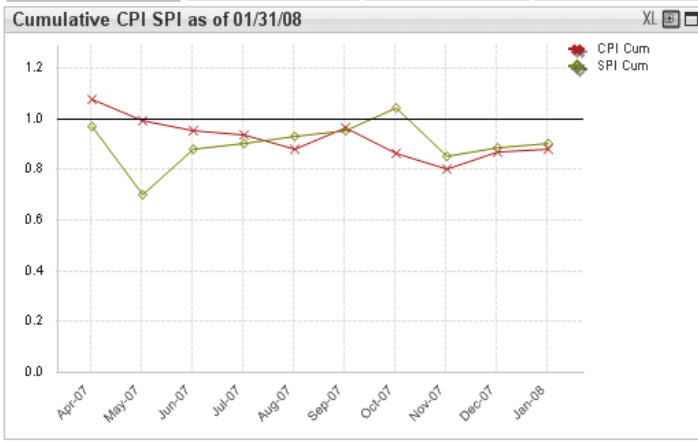
[Show Contract Info](#)

Show All Elements Within Contract Bring Last Selection Back

CPI vs TCPI LRE

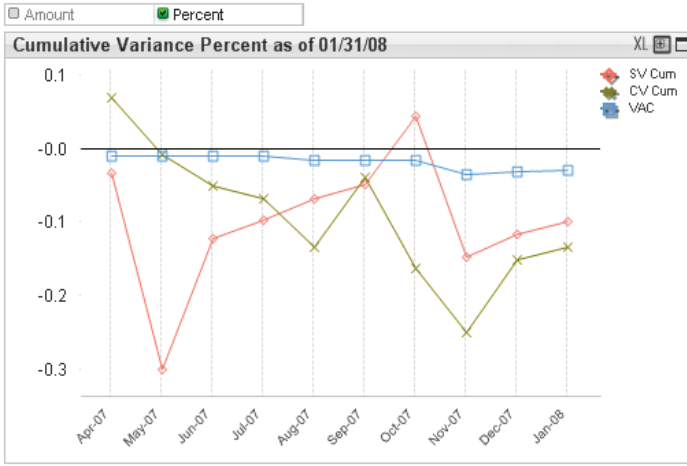
Element	CAM	Sv	Cv	Va	CPI	TCPI-LRE	CPI to LRE
2100 - PROJ MA...	Brown	↔	↔	↔	0.94	1.04	-0.10
2300 - FUNC INT...	Price	↓	↓	↔	0.95	0.91	0.04
3100 - SENSORS	Smith	↑	↓	↔	0.97	0.99	-0.02
3200 - COMMUN...	Tideman	↑	↓	↔	0.84	1.03	-0.19
3600 - PCC	Zepka	↓	↑	↔	0.85	1.03	-0.18
3700 - DATA DIS...	Tideman	↑	↔	↔	1.00	1.00	0.00
5100 - ENG DATA	Novak	↑	↓	↔	0.73	1.30	-0.57

CPI & SPI EOC Narratives Bull's Eye



Cumulative Performance Summary as of 01/31/08

Elements	EndDate	Apr-07	May-07	Jun-07
2100 - PROJ MANAGEMENT	BCWS	6,000.0	17,000.0	28,000.0
	BCWP	6,000.0	12,000.0	26,000.0
	ACWP	5,000.0	12,000.0	26,000.0
	SCH VAR	0.0	-5,000.0	-2,000.0
	SCH VAR %	0.00%	-29.41%	-7.14%
	SPI	1.000	0.706	0.929
	COST VAR	1,000.0	0.0	0.0
	COST VAR %	16.67%	0.00%	0.00%
	CPI	1.200	1.000	1.000
	BAC	627,000.00	627,000.00	627,000.00
2300 - FUNC INTEGRA	EAC	572,000.00	572,000.00	572,000.00
	VAC	55,000.00	55,000.00	55,000.00
	BCWS	8,000.0	22,000.0	38,000.0
	BCWP	8,000.0	17,000.0	36,000.0
	ACWP	7,000.0	16,000.0	36,000.0
	SCH VAR	0.0	-5,000.0	-2,000.0
	SCH VAR %	0.00%	-22.73%	-5.26%



Worse than -10% Between -10% and -5% Between -5% and 10% Better than 10% ↑ Change Threshold 5%

Last Updated: 9/18/2013 12:13:10 AM
Build: 7.0.0700.234





File Edit View Selections Layout Settings Bookmarks Reports Tools Object Window Help

Master Dashboard Data Validation Emerging Issues Detail Analysis EAC Res

Cumulative Performance Summary as of 01/31/08

Contract: MOH-2 for 01/31/08

Elements EndDate Apr-07 May-07

BCWS	6,000.0	17,000.0
BCWP	6,000.0	12,000.0
ACWP	5,000.0	12,000.0
SCH VAR	0.0	-5,000.0
SCH VAR %	0.00%	-29.41%
SPI	1.000	0.706
COST VAR	1,000.0	0.0
COST VAR %	16.67%	0.00%
CPI	1.200	1.000
BAC	627,000.00	627,000.00
EAC	572,000.00	572,000.00
VAC	55,000.00	55,000.00
BCWS	8,000.0	22,000.0
BCWP	8,000.0	17,000.0
ACWP	7,000.0	16,000.0
SCH VAR	0.0	-5,000.0
SCH VAR %	0.00%	-22.73%

2100 - PROJ MANAGEMENT

2300 - FUNC INTEGRA

Cumulative CPI SPI as of 01/31/08

Unit Scale: Ones

Selected Related Unrelated

Worse than -10% Between -10% and -5% Between -5% and 10% Better than 10%

Change Threshold 5%

Updated: 9/18/2013 12:13:10 AM

Elements	EndDate	Apr-07	May-07	Jun-07	Jul-07	Aug-07	Sep-07
2100 - PROJ MANAGEMENT	BCWS	6,000.0	17,000.0	28,000.0	47,000.0	68,000.0	107,000.0
2100 - PROJ MANAGEMENT	BCVP	6,000.0	12,000.0	26,000.0	46,000.0	67,000.0	109,000.0
2100 - PROJ MANAGEMENT	ACWP	5,000.0	12,000.0	26,000.0	46,000.0	72,000.0	106,000.0
2100 - PROJ MANAGEMENT	SCH VAR	0.0	-5,000.0	-2,000.0	-1,000.0	-1,000.0	2,000.0
2100 - PROJ MANAGEMENT	SCH VAR %	0.00%	-29.41%	-7.14%	-2.13%	-1.47%	1.87%
2100 - PROJ MANAGEMENT	SPI	1.000	0.706	0.929	0.979	0.985	1.0
2100 - PROJ MANAGEMENT	COST VAR	1,000.0	0.0	0.0	0.0	-5,000.0	3,000.0
2100 - PROJ MANAGEMENT	COST VAR %	16.67%	0.00%	0.00%	0.00%	-7.46%	2.75%
2100 - PROJ MANAGEMENT	CPI	1.200	1.000	1.000	1.000	0.931	1.02
2100 - PROJ MANAGEMENT	BAC	627,000.00	627,000.00	627,000.00	627,000.00	627,000.00	627,000.00
2100 - PROJ MANAGEMENT	EAC	572,000.00	572,000.00	572,000.00	572,000.00	576,000.00	576,000.00
2100 - PROJ MANAGEMENT	VAC	55,000.00	55,000.00	55,000.00	55,000.00	51,000.00	51,000.00
2300 - FUNC INTEGRA	BCWS	8,000.0	22,000.0	38,000.0	64,000.0	92,000.0	145,000.0
2300 - FUNC INTEGRA	BCVP	8,000.0	17,000.0	36,000.0	64,000.0	94,000.0	152,000.0
2300 - FUNC INTEGRA	ACWP	7,000.0	16,000.0	36,000.0	63,000.0	99,000.0	146,000.0
2300 - FUNC INTEGRA	SCH VAR	0.0	-6,000.0	-2,000.0	0.0	2,000.0	7,000.0
2300 - FUNC INTEGRA	SCH VAR %	0.00%	-22.73%	-5.26%	0.00%	2.17%	4.82%
2300 - FUNC INTEGRA	SPI	1.000	0.773	0.947	1.000	1.022	1.0
2300 - FUNC INTEGRA	COST VAR	1,000.0	1,000.0	0.0	1,000.0	-5,000.0	6,000.0
2300 - FUNC INTEGRA	COST VAR %	12.50%	5.88%	0.00%	1.56%	-5.32%	3.95%
2300 - FUNC INTEGRA	CPI	1.143	1.063	1.000	1.016	0.949	1.0
2300 - FUNC INTEGRA	BAC	578,000.00	578,000.00	578,000.00	578,000.00	578,000.00	578,000.00
2300 - FUNC INTEGRA	EAC	443,000.00	443,000.00	443,000.00	443,000.00	446,000.00	446,000.00

Know more. Do more.™



File Edit View Selections Layout Settings Bookmarks Reports Tools Object Window Help

Master Dashboard Data Validation Emerging Issues **Detail Analysis** EAC Realism Future Forecast Sheet10

Contract: MOH-2 for 01/31/08

Show All Elements Within Contract Bring Last Selection Back

Element	CAM	Sv	Cv	Va	CPI	TCPI-LRE	CPI to LRE
2100 - PROJ MA...	Brown	↑	↓	↔	0.94	1.04	-0.10
2300 - FUNC INT...	Price	↓	↓	↔	0.95	0.91	0.04
3100 - SENSORS	Smith	↑	↓	↔	0.97	0.99	-0.02
3200 - COMMUN...	Tideman	↓	↓	↔	0.94	1.03	-0.19
3600 - PCC	Zepka	↓	↔	↔	0.95	1.03	-0.18
3700 - DATA DIS...	Tideman	↓	↔	↔	1.00	1.00	0.00
5100 - ENG DATA	Novak	↓	↓	↔	0.73	1.30	-0.57

Cumulative Performance Summary as of 01/31/08

Element	EndDate	Apr-07	May-07	Jun-07
BCWS		8,000.0	17,000.0	28,000.0
BCWP		8,000.0	12,000.0	28,000.0
ACWP		5,000.0	12,000.0	28,000.0
SCH VAR		0.0	-5,000.0	-2,000.0
SCH VAR %		0.00%	-28.41%	-7.14%
SPI		1.000	0.706	0.929
COST VAR		1,000.0	0.0	0.0
COST VAR %		16.67%	0.00%	0.00%
CPI		1.200	1.000	1.000
BAC		627,000.00	627,000.00	627,000.00
EAC		672,000.00	672,000.00	672,000.00
VAC		65,000.00	65,000.00	65,000.00
BCWS		8,000.0	22,000.0	38,000.0
BCWP		8,000.0	17,000.0	38,000.0
ACWP		7,000.0	16,000.0	38,000.0
SCH VAR		0.0	-5,000.0	-2,000.0
SCH VAR %		0.00%	-22.73%	-5.26%

Cumulative CPI SPI as of 01/31/08

Month	CPI Cum	SPI Cum
Apr-07	1.20	1.00
May-07	1.00	0.70
Jun-07	0.95	0.85
Jul-07	0.90	0.90
Aug-07	0.95	0.90
Sep-07	0.95	0.95
Oct-07	0.85	1.05
Nov-07	0.80	0.85
Dec-07	0.85	0.85
Jan-08	0.90	0.90

Performance Percent as of 01/31/08

Month	SV Cum	CV Cum	VAC
Apr-07	0.00	0.00	0.00
May-07	-0.20	-0.20	0.00
Jun-07	-0.10	-0.10	0.00
Jul-07	-0.10	-0.10	0.00
Aug-07	-0.10	-0.10	0.00
Sep-07	-0.10	-0.10	0.00
Oct-07	-0.10	-0.10	0.00
Nov-07	-0.10	-0.10	0.00
Dec-07	-0.10	-0.10	0.00
Jan-08	-0.10	-0.10	0.00

File Home Insert Design Transitions Animations Slide Show Review View Add-Ins

Clipboard Copy Paste Format Painter New Slide Section Slides Paragraph Font Paragraph Drawing Find Replace Select Editing

Cumulative CPI SPI as of 01/31/08

Month	CPI Cum	SPI Cum
Apr-07	1.20	1.00
May-07	1.00	0.70
Jun-07	0.95	0.85
Jul-07	0.90	0.90
Aug-07	0.95	0.90
Sep-07	0.95	0.95
Oct-07	0.85	1.05
Nov-07	0.80	0.85
Dec-07	0.85	0.85
Jan-08	0.90	0.90

Deltek Know more. Do more.™



wInsight Analytics – Pre-built Content

Single-Project/Contract

Multi-Project/Contract

Master Dashboard Overview

Data Validation

Emerging Issues

Detail Analysis

EAC Realism

Future Forecast

WBS OBS Analysis

Extending the Value

Change/Add to existing Dashboards
Create New Dashboards/Metrics