

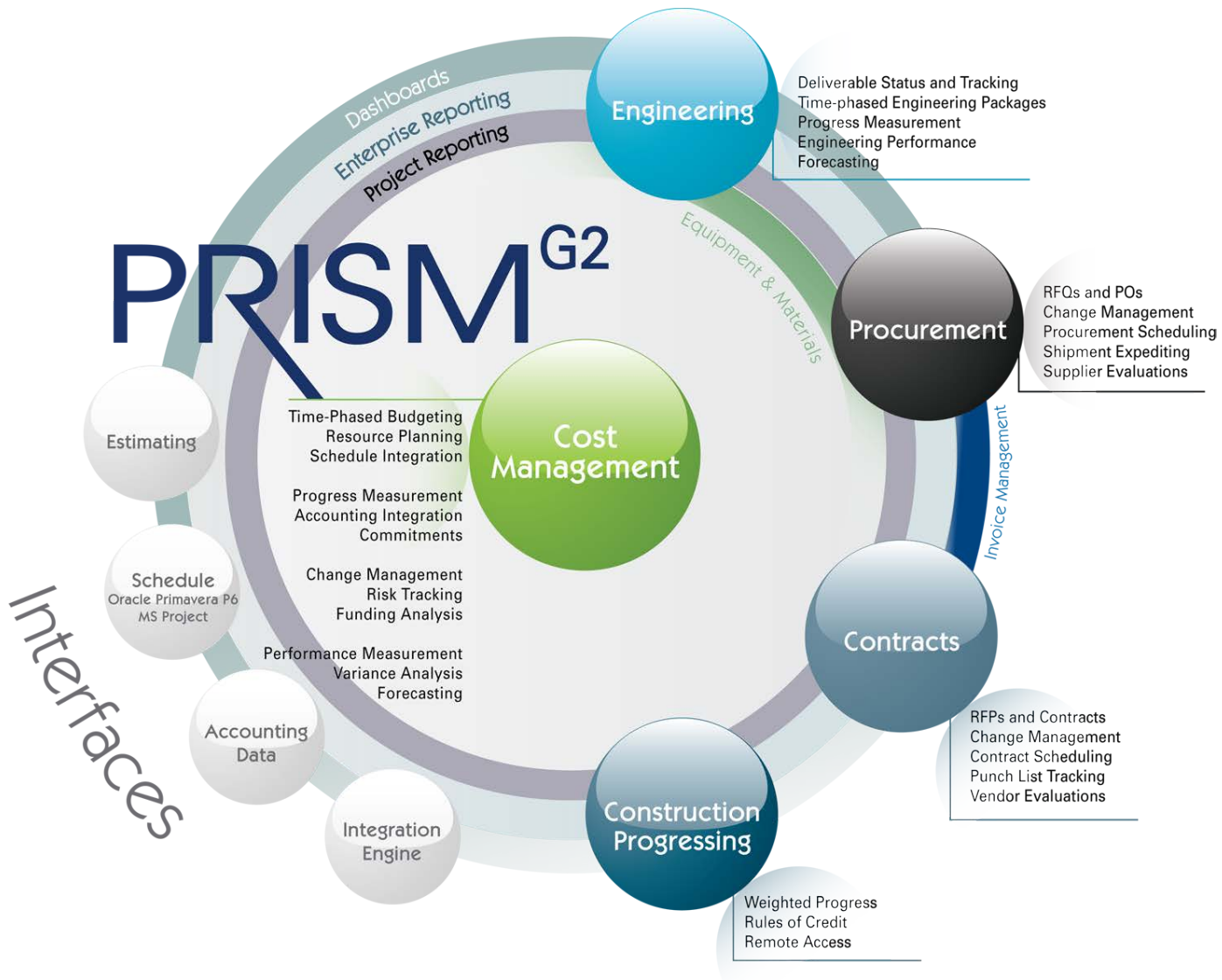


Introduction to PRISM^{G2}

Capabilities and Future Enhancements

Wendy Freeman
Senior Project Controls Consultant
wfreeman@arescorporation.com

PRISM^{G2} Total Cost Management



Sample Enterprise Dashboard

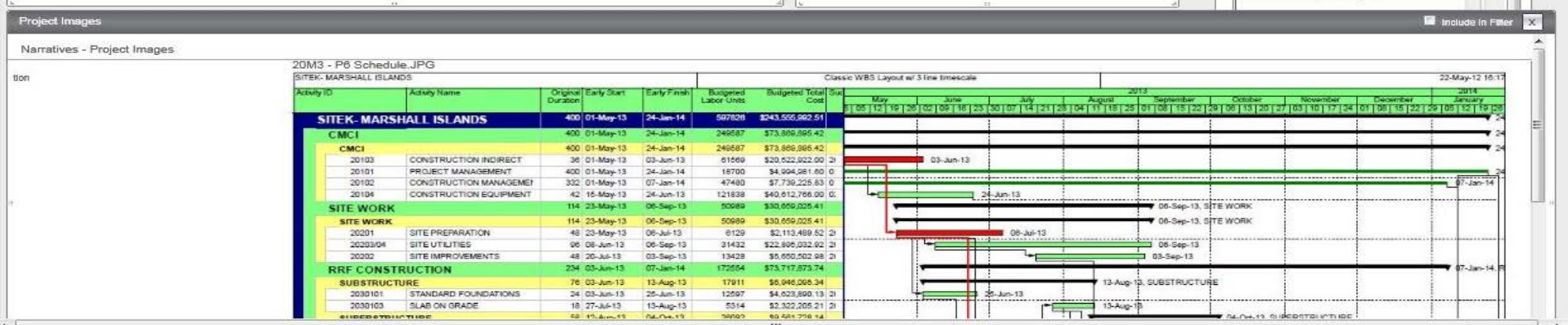
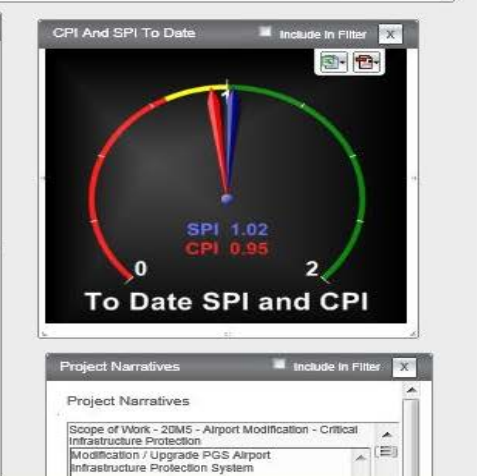


Current Enterprise Period: [Arrange] [Refresh Data] [View All Filters] [Copy Dashboard] [Change Dashboard]

Cost Performance Trending

Analyze

Project ID	Project Title	To Date Budget	To Date Earned	To Date Actual	To Date SV	To Date SV%	To Date SPI	To Date CV	To Date CV%	To Date CPI	Variance At Completion	At Comp. CV%	At Comp. CPI
10M3	NATLER Airport Terminal Modification	813,557	716,850	733,136	-96,707	-11.89%	0.88	-16,286	-2.27%	0.93	-75,000	-9.33%	0.99
10M5	MSS Electrical Turbine Construction	273,553	344,176	325,424	70,623	25.82%	1.26	18,752	5.45%	1.06	-57,200	-20.63%	0.99
20M3	PLATTE Electrical Power Generating Station	2,995,986	3,162,674	3,248,305	166,688	5.56%	1.06	-85,631	-2.71%	0.97	-356,209	-11.89%	0.95
20M5	Airport Modification - Critical Infrastructure Protection	547,106	500,253	650,848	-48,854	-8.93%	0.91	-150,895	-27.59%	0.77	-114,400	-20.73%	0.99
Totals:		4,630,202	4,723,952	4,957,713	93,751	2.02%	1.02	-233,761	-4.95%	0.95	-1,102,809	-2.03%	0.98



Sample Project Dashboard With Key Performance & Project Narratives



Welcome: KARL! Data Source: Live Help | Logout

Enterprise Performance - 2 Mining Projects Government Projects Current Projects - Cost Performance Problem Projects Hours Performance +

Current Enterprise Period: Arrange Refresh Data

Project Images

Narratives - Project Images

- Hong Kong Intl Airport.png

Hours Performance Trending

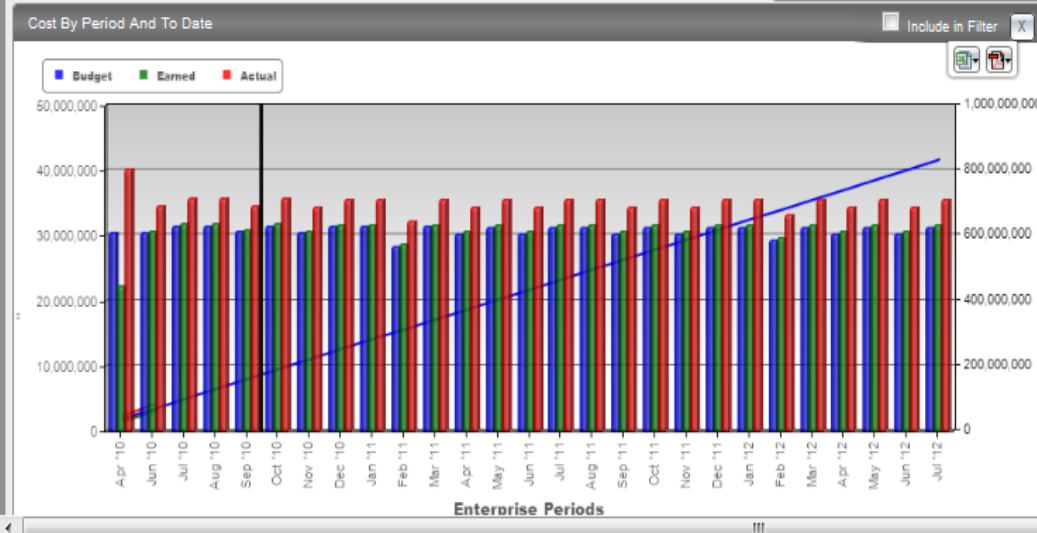
Analyze

Project ID	Project Title	To Date Budget	To Date Earned	To Date Actual	To Date SV	To Date SV%	To Date SPI	To Date HV	To I
B001	Pumps Replacement Project	0	2,037	2,524	2,037	NaN	NaN	-487	
B004	Hong Kong International Airport	151,620	132,000	175,000	-19,620	-12.94%	0.87	-43,000	
Totals:		151,620	134,037	177,524	-17,583	-11.60%	0.88	-43,487	

Hours Comparison

Analyze

Project ID	Project Title	Baseline Budget	Budget Changes	Approved Budget	Period Actual
B001	Pumps Replacement Project	13,764	0	13,764	1,341
B004	Hong Kong International Airport	2,200,000	0	2,200,000	30,000
Totals:		2,213,764	0	2,213,764	31,341



Project Narratives

Documents by Project

- B001 - Pumps Replacement Project
 - January 2012 Executive Summary Report.PDF
 - activity schedule.PDF
 - progress bar chart and s-curve.PDF
- B004 - Hong Kong International Airport
 - Hong Kong Rail.pdf
 - Changes.pdf
 - Hong Kong Executive Summary.pdf

Project Narratives

Scope of Work - B001 - Pumps Replacement Project

This upgrade will include repair and overhaul work, and also pump performance - to increase flow, shift best efficiency, etc.

Project Websites

Web Sites by Project

- B004 - Hong Kong International Airport
 - www.arescorporation.com/prism

Robust Product Roadmap



H1 2013

Field Progressing Q1 2013

- Construction Progressing (Web Services, HTML5, online/offline, device independent)
- Subcontractor Invoicing (Web Services, HTML5, online/offline, device independent)

Core G2 Q1 2013

- UN/CEFACT XML Output
- Custom Language
- Cash Flow & Revenue
- Invoice Matching

Project Intelligence & Reporting Q2 2013

- Integrated Cost and Schedule Based Analytics
- Drill-down & Drill Through
- Interactive Charts
- Reporting Data Warehouse
- ETL process from multiple PRISM G2 databases

Integration Engine Advancements

H2 2013

Contracts & Procurement Dashboards and Reports

Engineering & Construction Progressing Dashboards and Reports

Bi-directional workflow and communication loopback

Thank You!



www.arescorporation.com/prism