

Defense Cost And Resource Center (DCARC) EVM Central Repository (EVM-CR) Overview

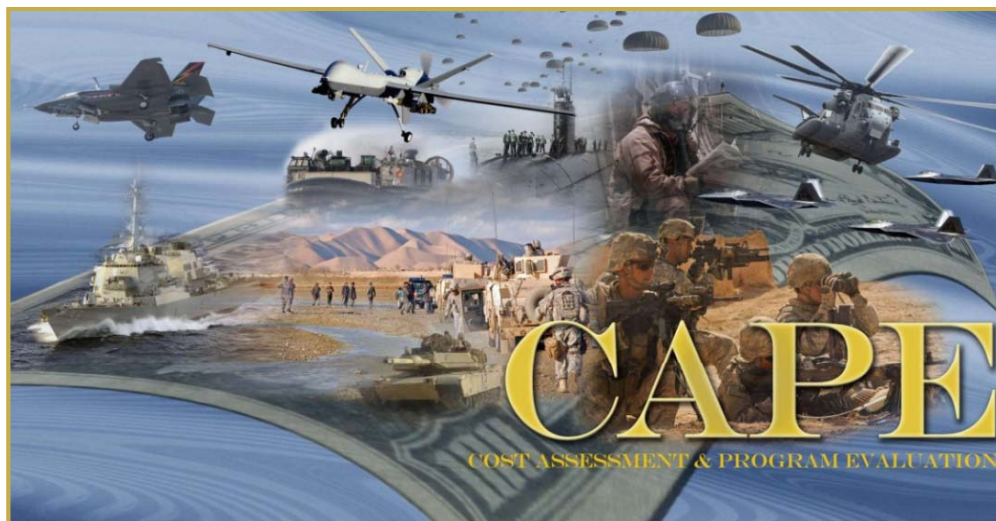
8 August 2011

John McGahan

DCARC IT Project Manager

Chief Scientist, Software Products & Services Group

Tecolote Research, Inc





OSD/CAPE & AT&L IT Services

Defense Cost And Resource Center (DCARC) IT Systems

- DCARC Portal: Secure, controlled access to cost and EV analysis and reporting information systems
 - Cost and Schedule Data Reporting Submit & Review (CSDR-SR) and Archive (DACIMS)
 - EVM Central Repository (EVM-CR)
- CSDR Planning & Execution Tool (cPET): Prepare CSDR plans & cost reports; perform validations
- CPR File Viewer: view/analyze EV submissions (EDI, XML), data quality checks and performance tripwires, advance reporting and charting
- Over 3500 users

DCARC.PAE.OSD.MIL

The screenshot displays a web browser window showing the DCARC Knowledge Portal. The portal includes a login section with fields for Username and Password, and a 'Log In' button. Below the login section, there are links for 'Not already registered?' and 'Forgot your password?'. A 'CSDR Planning & Execution Tool' window is open, showing a 'welcome to cPet' message and 'Suggestions for getting started:'. A 'CPR File Viewer' window is also open, displaying a 'Welcome' message and a graph showing 'Estimate of Complete Growth & Efficiency'.



DCARC Systems Overview

OSD

DCARC For Official Use Only
When this document is printed, it needs to be stamped top and bottom with the appropriate classification.

DCARC Knowledge Portal

Defense Cost and Resource Center - Enhancing DoD Cost Analysis

Username: mcgahanji Roles: cPetWeb_User, CSDRSR_Reviewer, CSDRSR_Submitter, DACIMS35_Analyst, EVM_Analyst, EVM_Reviewer, EVM_Submitter [Log Out](#)

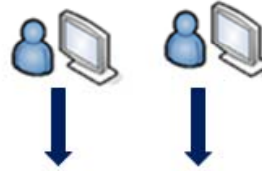
Home | [Contact Us](#)

Knowledge Portal Home

DCARC Applications

- [cPetWeb \(CSDR Planning and Execution Tool\)](#)
- [CSDR Submit-Review Web Site](#)
- [1921-3 & FPR Submit - Review Web Site](#)
- [DACIMS \(Defense Automated Cost Information Management System\) 3.5 Web Site](#)
- [EVM \(Earned Value Management\) Web Site](#)

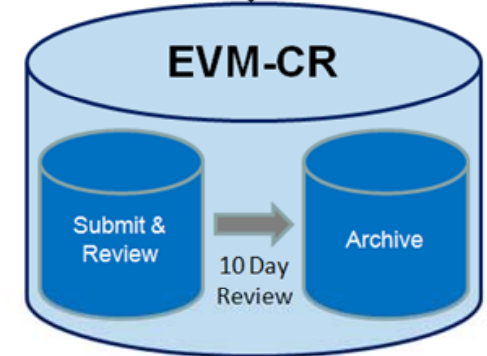
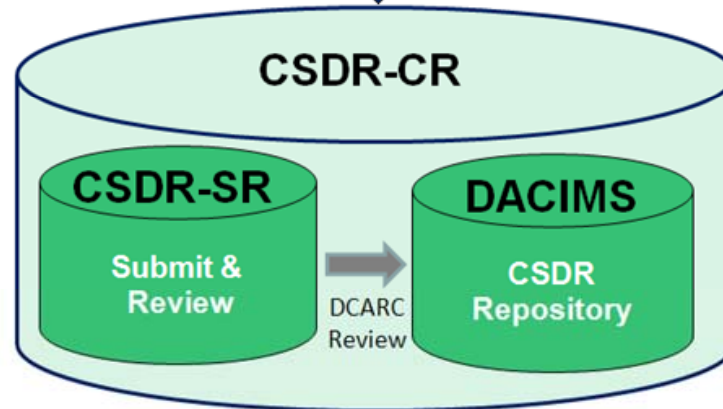
Weapon System Supplier / Data Provider



DoD Stakeholder / Data Consumer



DCARC Portal (User Access & Security Layer)



DCARC Portal Provides Single Login Access To CSDR and EVM Systems



EVM-CR Overview

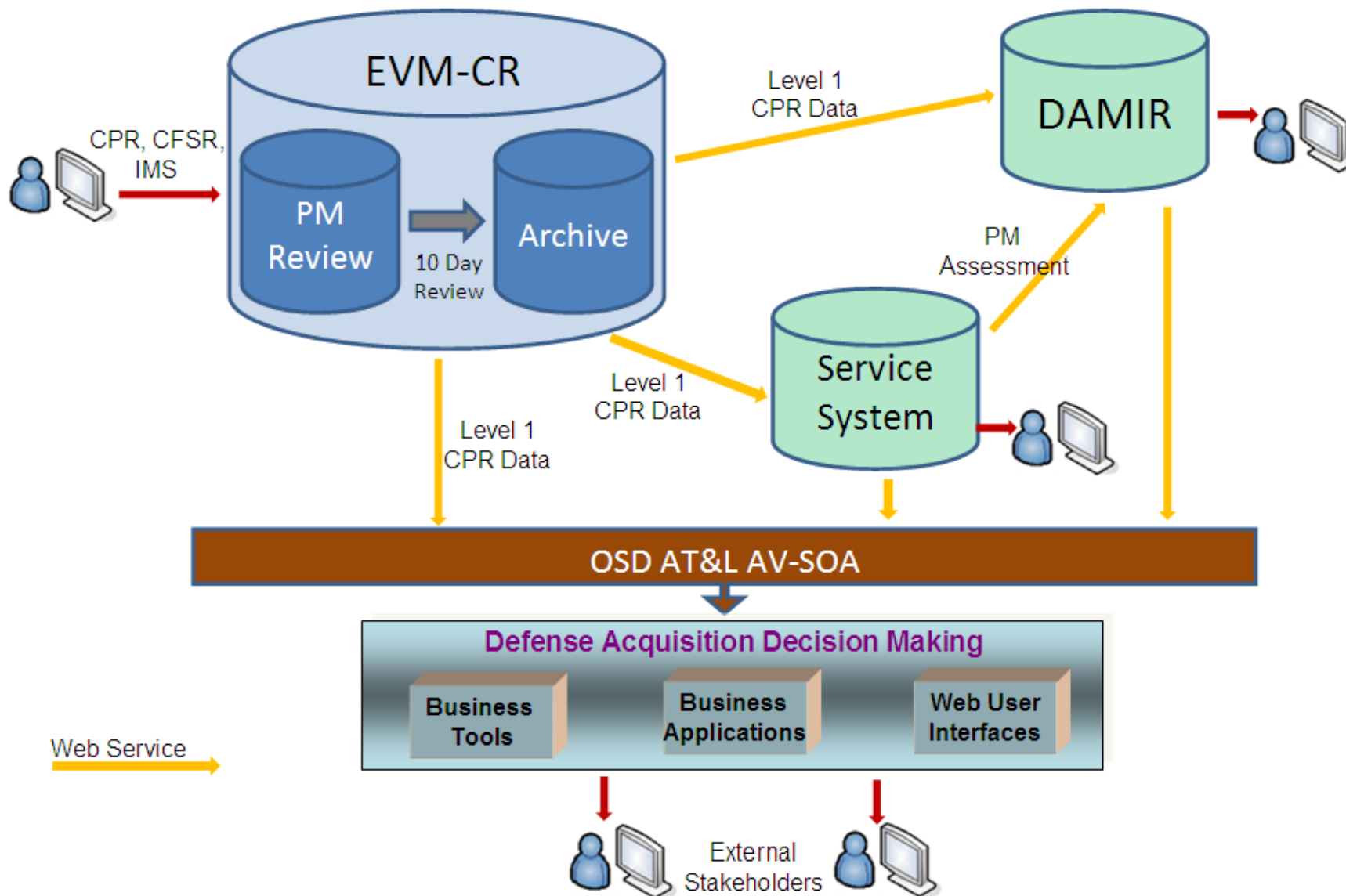
Provides...

- Centralized reporting, collection, and distribution for Key Acquisition Data, starting with Contract Performance Reports (CPRs)
- Complete, accurate, timely, and secure transfer of electronic data from the contractor to the CR
- Secure and controlled warehousing of data in the CR
- Controlled, timely, and secure access to data by authorized users
- Business rules govern reporting, access, and availability of data
- Minimal workload impact and required resources to implement CR



EVM-CR Overview

OSD CAPE



Providing Timely and Accurate Key Acquisition Data



EVM-CR Policy/Business Rules

OSD CAPE

- Applies to ACAT 1A, 1C and 1D program/contracts with EVM Reporting Requirements
- What is submitted and when:
 - What you have on contract, due on contracted dates
 - e.g., CPR, CFSR, IMS
 - However, IMS can be “coordinated” with EVM Help Desk based on file size limitations
- Submission Form Factors
 - CPR:
 - Formats 1-5 as defined on contract
 - Formats 1-4: EDI 839 or XML (e.g., wInsight TRN or XML)
 - Formats 1-4: Human readable (e.g., Excel)
 - Formats 5: Human readable (e.g., MS Office)
 - CFSR: Human readable (e.g., Excel)
 - IMS: consistent with contract requirement; not standardized



EVM-CR Policy/Business Rules

- Other submission requirements/issues
 - Annual CPR history or backup file (and after re-baselines)
 - Transitioning to DCMA-sponsored XML schema and implementation guidelines
 - No executables, macros, or links
- Business Rules/Process For Submission
 - Day 0: Contractor Submits to CR
 - Reviewer and submitter teams notified
 - Level 1 CPR extract data available to Service database (AIM, Dashboard, SMART)
 - 10-day review window before publishing
 - Day 10: Level 1 extract data available to other OSD systems (OSD AV/SOA & DAMIR) unless rejected



EVM-CR Submission & Review Functions

OSD

- Manage Submission events and data submission activities

Portal Home | Contact Us | EVM Home | Upload Home | Search Contracts | Help

Upload Home

(** EVM Data Only, No CSDR Data **)

Submission Events | Assigned Contracts | Submissions in Progress | Rejected Submissions | Submission History

Submissions currently in progress

Submission ID	Report Date	Submission Event	Submission Date	Prime Contract Number	Sub Contract Number	Contract Task	Program Name	Contractor	Contractor Division	Upload	Cancel
13655	3/31/2011	CPR		N00030-09-C-0002		FY09 Fleet	Trident II	Prime: The Boeing	Prime: Integrated Shipboard Systems	Upload	Cancel
14872	6/30/2011	CPR						eing	Prime: Integrated Shipboard Systems	Upload	Cancel
14876	6/30/2011	CPR						eing	Prime: Integrated Shipboard Systems	Upload	Cancel
14878	6/30/2011	CPR						eing	Prime: Integrated Shipboard Systems	Upload	Cancel

Upload Submission

Program: Trident II Missile
 Contract Number / Task: N00030-09-C-0002 / FY09 Fleet Support
 Submission ID: 14872

Submission Info

Files

Contract Information

Contr #: N00030-09-C-0002 Ctr: The Boeing Company Division: Integrated Shipboard Systems Location: Huntington Beach, CA Cage Code:	Sub Contr #: Sub Ctr: Division: Location: Cage Code:	Program Program Name: Trident II Missile PNO: 178 Program Mgr: RADM Terry Ber Service: NAVY Mil Handbook: MISSILE Weapon Sys: PROJECTILE
---	---	---

Contract Tasks: FY09 Fleet Support, FY10 Fleet Support

Contract Type: CPIF Start Date: End Date: Stops Contract Reporting?: No EDI Required On Contract?: Yes

Contract Task & Submission Event

Contract Task: FY09 Fleet Support
 Submission Event: CPR
 Expected Report Date: 6/30/2011
 Expected Submission Date: 7/26/2011
 Expected Files: CPR

Submission Details

Report Date: 6/30/2011
 Comment: (Max 256 chr.) Winsight file for ESGN FY09 June 2011 ME CPR

Point of Contact Information

Name:
 Phone:
 Fax:
 Email:



EVM-CR Submission & Review Functions

OSD

- Typical CPR Submission Package

[Contract](#)
[Submission](#)
[Files](#)
[Reviewers](#)

Submission Files

	File Name	File Type	CPR Level	File Comment
	201106_A016_CPR_RCDP.xml	CPR EDI/XML	Total	
	A016_MUE_CLIN2_201106_WSA.wsa	Other		wsa
	A016_CPR_Format_1-5_MUE_CLIN_002_201106.xls	CPR Other		Format 1-5 xls
	G&A % Allocation (Attachment 1) 201106.xls	CPR Format 1		
	MUE CPR Cover Page - June 2011.pdf	CPR Other		Signed cover page
	Reference CPR Data (Attachment 2) 201106.xls	CPR Other		Reference data

Reviewer Files

There are no reviewer files uploaded for this submission.

Select a file to Upload

Caution: The total size of each file must be less than 100 mb.

File Comment:

Review level 1 CPR data to confirm correct data from EDI/XML submissions

UNCLASSIFIED

9

Common Data Quality Problems

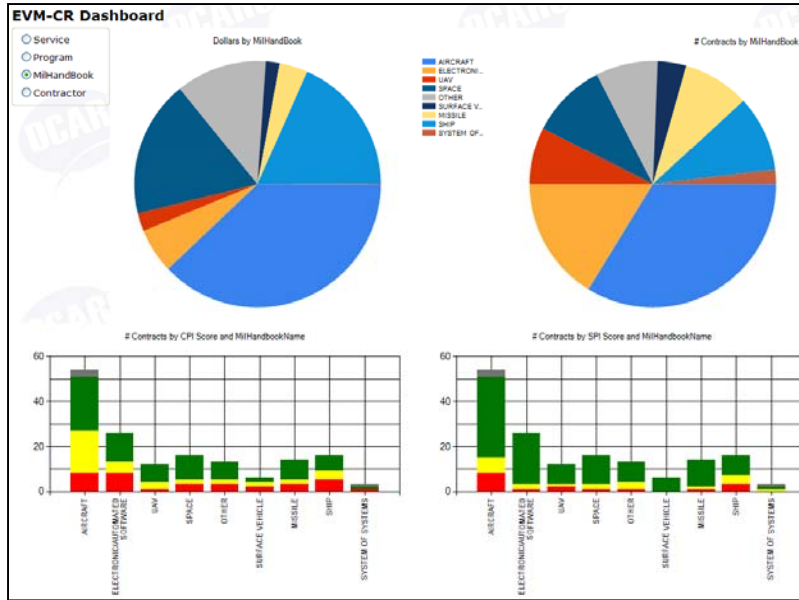
OSD

- Cost “units” problem: Reporting \$ units but marking as \$K
- Incomplete or improperly formed EDI/XML files
 - PMB line missing
 - WBS Item names (description) missing
 - Incorrect or not specified “non-add” flags (and which are not supported in EDI (TRN) format)
 - Parent WBS items not providing values
- Suggest
 - PMB line must be included as a cross-check for WBS roll-up
 - If reporting “non-add” elements (including G&A, COM, etc), you need to use XML (and need PMB line)
 - Push for adoption of UN/CEFACT schema and CPR Implementation Guidelines

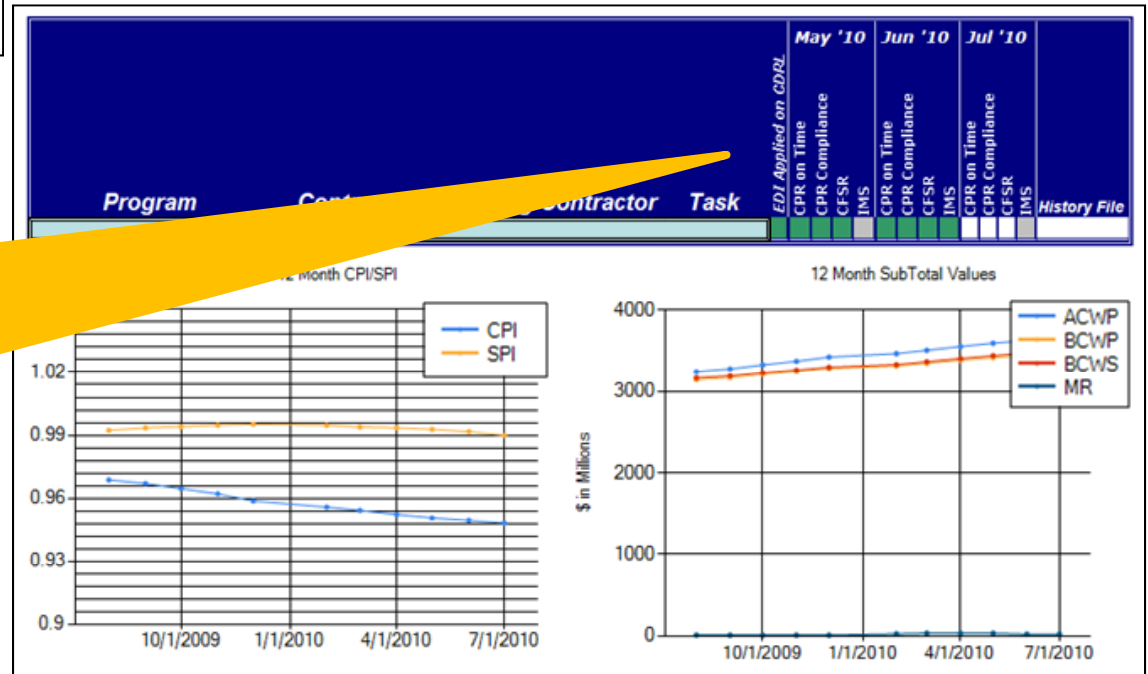


Dashboard & Reporting Compliance

OSD



- Dashboard provides real-time aggregation of summary EV data to program level, mil-handbook, or service
- EV reporting compliance assessment is a critical component of the monthly DAES assessments



Reporting Compliance Metrics

- 1) Contract CDRs provided
- 2) Submission Timeliness
- 3) Form Factor (EDI / XML)
- 4) CFSR
- 5) IMS
- 6) Current CPR History File



NEW: EVM-CR Analyst Support & Visual Display

OSD

- On-the-fly integration of EVM-CR submission packages (EDI/XML data) to analyst tools

For Official Use Only
When this document is printed, it needs to be stamped top and bottom with the appropriate classification.

EVM CR Visual Display

Defense Cost and Resource Center - Enhancing DoD Cost Analysis OSD CAPE

Welcome back jmcgahan! [Log Out](#)

DCARC Home
Contact Us
Admin
Program Search

Program Search

Group By

Service

Daes Group

ACAT

Commodity Group

Filter By

Service:

DAES Group:

ACAT:

Commodity Group:

Contractor:

Reporting Status:

Latest DAES:

AIR FORCE (35)

ARMY (47)

DOD (17)

MARINES (1)

NAVY (46)

Apply Changes

Reset

Go To Favorites

UNCLASSIFIED

12



EVM-CR Analyst Support & Visual Display

OSD

- On-the-fly integration of EVM-CR submission packages (EDI/XML data) for all reporting tasks and all time-periods to analyst tools

For Official Use Only
When this document is printed, it needs to be stamped top and bottom with the appropriate classification.

EVM CR Visual Display

Defense Cost and Resource Center - Enhancing DoD Cost Analysis OSD CAPE

Welcome back jmcgahan! Log Out

[DCARC Home](#) | [Contact Us](#) | [Admin](#) | [Program Search](#)

Contract Tasks

Program: Death Star Program (Testing Purposes)
Contract Number: N0000-00-0001
Contract Task: Death Star Construction

Contract Task Summary View
Browse
EVM Validity Checks
Export
Chart
Settings

Header
WBS Elements
OBS Elements
Summary Elements
Baseline
Staffing

Contract Number	Contract Task	Last Refreshed	Mark as Favorite
N0000-00-0001	Death Star Construction	4/25/2011	<input checked="" type="checkbox"/>
N0000-00-0002	USV Development 1	4/25/2011	<input type="checkbox"/>
N0000-00-0002	USV Development 2	4/25/2011	<input type="checkbox"/>

5/23/2010

Contractor Name	Contract Name	Contract Number	Contract Type	Program Name	Program Phase	Report From	Report To
Rambo Systems	Awesome Weapon Development(Test)	N0000-00-N-0000	CPFF	DeathStar	RDTE	4/26/2010	5/23/2010

Contract Quantities	Share Above	Share Below	Cost of Auth. Unpr. Work	Target Profit Fee	Target Profit Fee %	Target Price	Estimated Price
RDTE:0, PROD:0	0	0	100,000	8,376,000	10	86,962,000	87,062,000

Contract Ceiling	Est. Ceiling Price	Best Case EAC	Worst Case EAC	Most Likely EAC	CBB	Neg Cost
95,338,000	95,438,000	147,181,100	156,066,500	147,829,100	87,062,000	86,962,000

Contract Start Date	Work Start Date	Contract Definitization Date	Planned Completion Date	Contract Completion Date	Estimated Completion Date
1/1/2007		3/8/2007	9/24/2010	12/31/2008	8/18/2011

UNCLASSIFIED

13



EVM-CR Analyst Support & Visual Display

OSD

Format 1 Data

Header	WBS Elements	OBS Elements	Summary Elements	Baseline	Staffing		
5/23/2010							
Contract Name	Contract Name	Contract Number	Contract Type	Program Name	Program Phase	Report From	Report To
Rambo Systems	Awesome Weapon Development(Test)	N0000-00-N-0000	CPFF	DeathStar	RDTE	4/26/2010	5/23/2010
Contract Quantities	Share Above	Share Below	Cost of Auth. Unpr. Work	Target Profit Fee	Target Profit Fee %	Target Price	Estimated Price
RDTE:0, PROD:0	0	0	100,000	8,376,000	10	86,962,000	87,062,000
Contract Ceiling	Est. Ceiling Price	Best Case EAC	Worst Case EAC	Most Likely EAC	CBB	Neg Cost	
95,338,000	95,438,000	147,181,100	156,066,500	147,829,100	87,062,000	86,962,000	
Contract Start Date	Work Start Date	Contract Definition Date	Planned Completion Date	Contract Completion Date	Estimated Completion Date		
1/1/2007		3/8/2007	9/24/2010	12/31/2008	8/18/2011		

Header	WBS Elements	OBS Elements	Summary Elements	Baseline	Staffing						
5/23/2010											
WBS Element Select Options											
Filter by reporting level: <input checked="" type="checkbox"/> 1 <input checked="" type="checkbox"/> 2 <input checked="" type="checkbox"/> 3 <input checked="" type="checkbox"/> 4 <input checked="" type="checkbox"/> 5											
Report Date	Element Name	Element ID	Reporting Level	Cum CPI	Cum SPI	Cumulative BCWS	Cumulative BCWP	Cumulative ACWP	Cumulative Sched Variance	Cumulative Cost Variance	BAC
5/23/2010	Weapon System	1	1	0.73	0.96	88,403,102	84,401,911	116,470,139	-4,001,191	-32,068,228	90,289,826
5/23/2010	All Up Ons (AUO) Space Vehicle	11	2	0.68	0.95	60,652,324	57,381,444	84,004,730	-3,270,880	-26,623,286	61,134,818
5/23/2010	DeathStar Stuff	111	3	0.83	1.00	2,032,020	2,032,020	2,463,893	0	-431,873	2,032,020
5/23/2010	Spaceframe Structure	1110	4	0.83	1.00	2,032,020	2,032,020	2,463,893	0	-431,873	2,032,020

Header	WBS Elements	OBS Elements	Summary Elements	Baseline	Staffing							
5/23/2010												
Report Date	Element Name	Element ID	Reporting Level	Cum CPI	Cum SPI	Cumulative BCWS	Cumulative BCWP	Cumulative ACWP	Cumulative Sched Variance	Cumulative Cost Variance	BAC	EAC
5/23/2010	Overhead			0.74	0.90	38,793,243	35,046,507	47,427,495	-3,746,736	-12,380,988	40,231,417	56,030
5/23/2010	CostOfMoney			0.70	0.89	589,000	522,000	744,000	-67,000	-222,000	750,000	814
5/23/2010	GeneralAdministrative			0.75	0.92	9,322,858	8,551,643	11,343,488	-771,215	-2,791,845	9,614,130	13,321
5/23/2010	UndistributedBudget					0	0	0	0	0	49,565	
5/23/2010	ManagementReserve					0	0	0	0	0	558,201	
5/23/2010	SubTotal			0.72	0.92	99,434,974	91,491,874	127,196,129	-7,943,100	-35,704,255	102,334,112	144,479
5/23/2010	Total			0.72	0.92	99,434,974	91,491,874	127,196,129	-7,943,100	-35,704,255	102,892,313	144,479

Format 2 Data

Header	WBS Elements	OBS Elements	Summary Elements	Baseline	Staffing				
5/23/2010									
OBS Element Select Options									
Filter by reporting level: <input checked="" type="checkbox"/> 1									
Report Date	Element Name	Element ID	Reporting Level	Cum CPI	Cum SPI	Cumulative BCWS	Cumulative BCWP	Cumulative ACWP	Cumulative Sched Variance
5/23/2010	Algorithms	IPGOR	1	0.62	1.00	3,167,284	3,167,284	5,147,433	0
5/23/2010	Integ Test & Analys	ITA	1	0.67	0.64	10,713,786	6,838,878	10,279,284	-3,874,908
5/23/2010	Manufacturing	MFG	1	0.97	0.91	10,591,372	9,581,674	9,917,296	-1,009,698
5/23/2010	Mission Planning	MP	1	0.99	0.86	1,161,344	1,001,514	1,011,784	-159,830
5/23/2010	Program Management	PMO	1	0.96	1.00	14,490,605	14,468,050	15,142,252	-22,555
5/23/2010	Teleporters PO	RCPO	1	0.57	0.96	17,230,512	16,463,653	29,135,060	-766,859
5/23/2010	Blastr	SKR	1	0.88	1.00	11,617,299	11,587,711	13,165,580	-29,588

Format 3 & 4 Data

Header	WBS Elements	OBS Elements	Summary Elements	Baseline	Staffing					
5/23/2010										
Performance Data										
Name	Cumulative BCWS	Current BCWS	+1	+2	+3	+4	+5	+6	User Defined 1	User Defined 2
BOP	98,282,290	1,159,000	1,329,000	528,000	372,000	447,000	0	0	0	0
EOP	99,434,974		1,322,000	546,000	372,000	448,000	0	0	0	0

Header	WBS Elements	OBS Elements	Summary Elements	Baseline	Staffing					
5/23/2010										
WBS Element Select Options										
Filter by reporting level: <input checked="" type="checkbox"/> 1										
Staffing Estimated Costs										
Code	Name	Level	Current Value	Cumulative Value	+1	+2	+3	+4	+5	+6
DATALINK	Data Link NRE	1								
IPGOR	Algorithms	1	550	38,379	753	596	587	624	520	520
ITA	Integ Test & Analys	1	3,454	62,751	5,206	3,919	2,782	3,094	2,612	2,565
MFG	Manufacturing	1	1,295	47,277	2,224	1,595	1,233	1,097	165	



EVM-CR Analyst Support & Visual Display

- On-the-fly data validation checks and performance tripwires

Contract Task Summary View | Browse | **EVM Validity Checks** | Export | Chart | Settings

5/23/2010

EVM validity check summary

Validity check	Count
ACWPWayAboveOrBelowPlannedValue	61

Choices:

ACWP % greater than planned value threshold:

Change % threshold on greater than comparisons:

Report Date	Element ID	Level	Element Name	Validity Check
5/23/2010	1	1	Weapon System	Cumulative ACWP (116470139) is 37.99% above Cumulative BCWP (84401911).
5/23/2010	11	2	All Up Ons (AUO) Space Vehicle	Cumulative ACWP (84004730) is 46.40% above Cumulative BCWP (57381444).
5/23/2010	110XA1CI	5	Interconnect Design NRE	Cumulative ACWP (1198)
5/23/2010	112	3	Guidance Electronics Unit (ZZZ)	Cumulative ACWP (4621332276075)

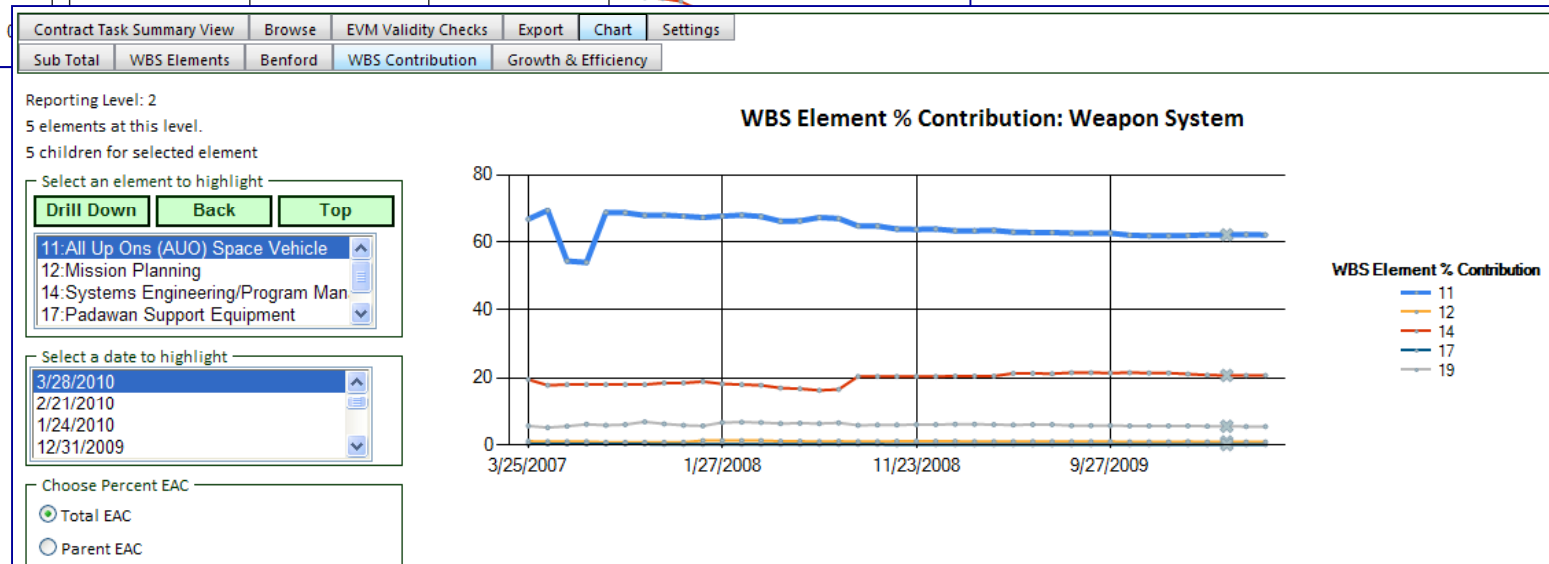
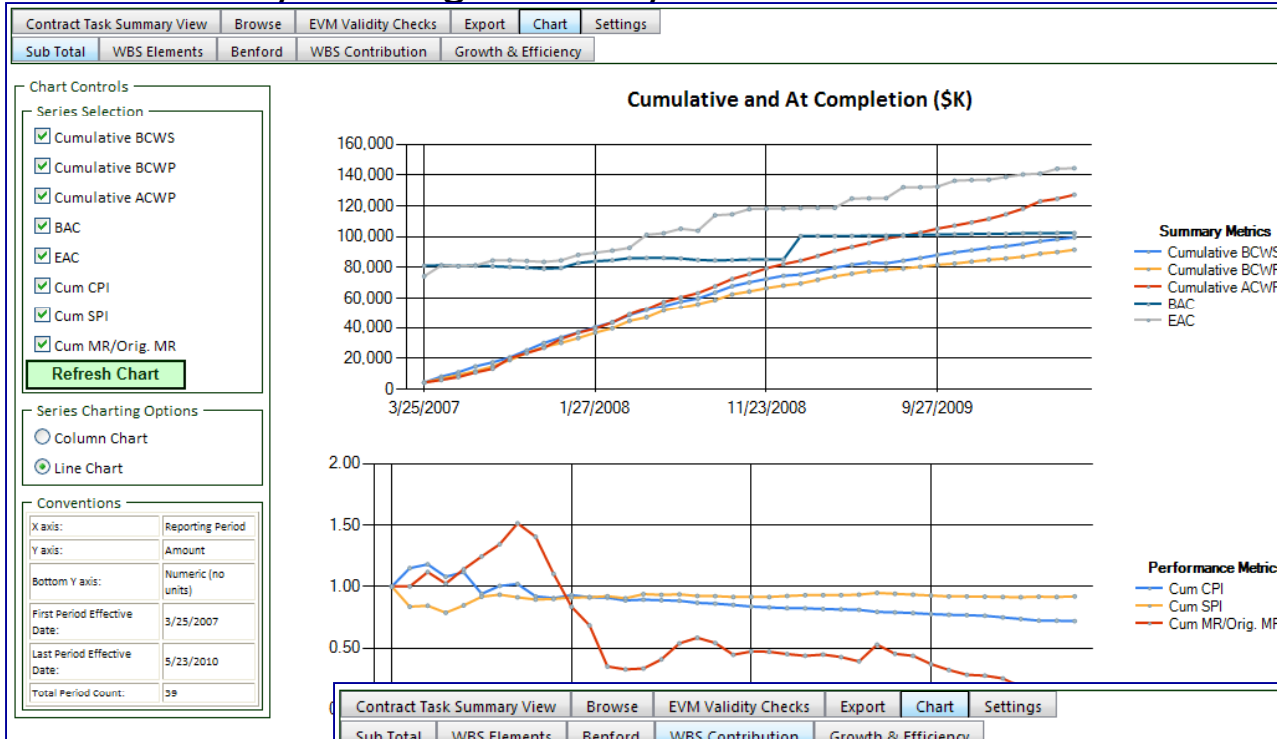
Cumulative ACWP (84004730) is 46.40% above Cumulative BCWP (57381444).

Report Date	Element Name	Element ID	Reporting Level	
5/23/2010	All Up Ons (AUO) Space Vehicle	11	2	
Cum CPI	Cum SPI	Cum ACWP	Cum BCWP	Cum BCWS
0.68	0.95	84,004,730	57,381,444	60,652,324
Cum SV	Cum CV	BAC	EAC	VAC
-3,270,880	-26,623,286	61,134,818	89,512,232	28,377,414



EVM-CR Analyst Support & Visual Display

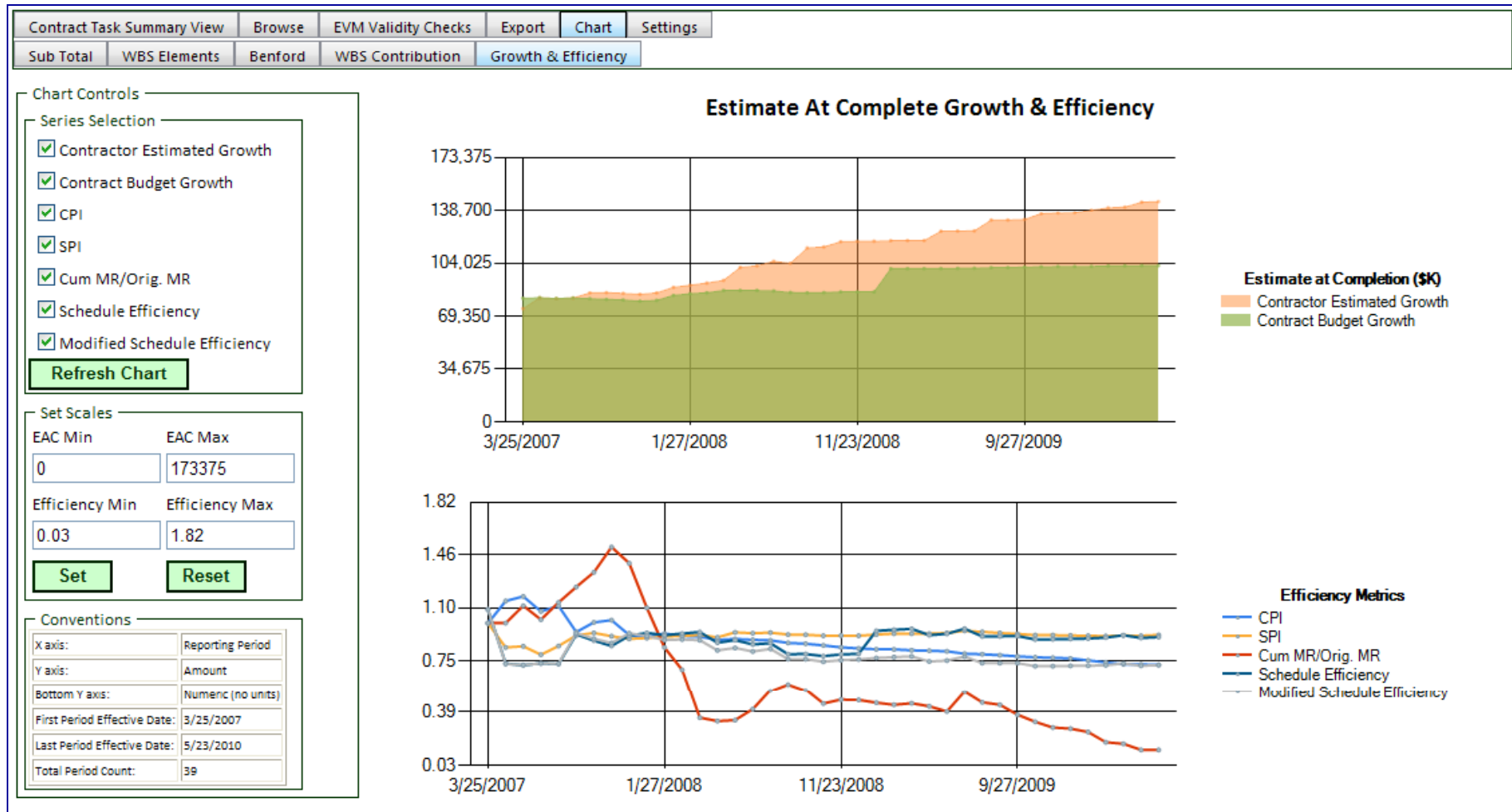
- On-the-fly charting and analysis





EVM-CR Analyst Support & Visual Display

- On-the-fly charting and analysis





Points of Contact

OSD CAPE

Mike Augustus
DCARC Acting Director
OSD-CAPE
mike.augustus@osd.mil
(703) 601-4850

Russell Vogel
Enterprise Information Manager
OSD-AT&L
russell.vogel@osd.mil
(703) 845-6677

John McGahan
DCARC IT Program Manager
Tecolote Research, Inc
Software Products/Services Group
jmcgahan@tecolote.com
(253) 564-1979 x2

Jen Horner
DCARC IT Help Desk
Tecolote Research, Inc
Software Products/Services Group
dcarcsupport@tecolote.com
(253) 564-1979 x1

